



堂源

TANG YUANG

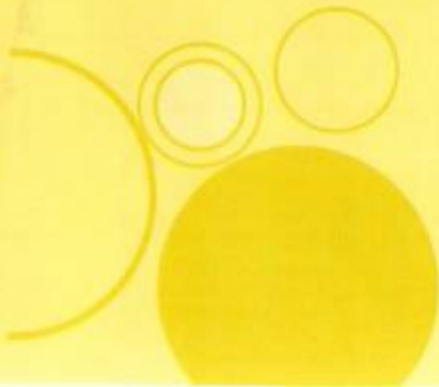
CONSTRUCTION ENGINEER, INC.

營造工程有限公司

公司簡介

Company

Brief Introduction



Reverse Circulation Pile



Install casing underground



Drill



Sediment pond(Polymer)



Placing reinforcement cage



S-600

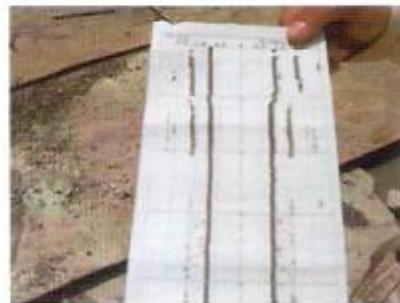
Full Casing Pile



Heavy hammer



Top-Down Construction Method



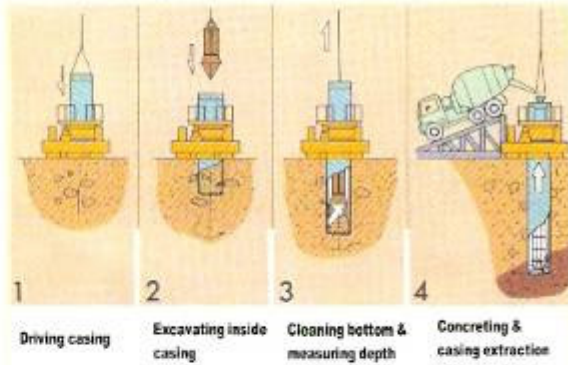
Ultrasonic testing engineering



Casing Rotator Drill Machine



RT-200



Auger Pile



MAIN MACHINERIES& EQUIPMENTS

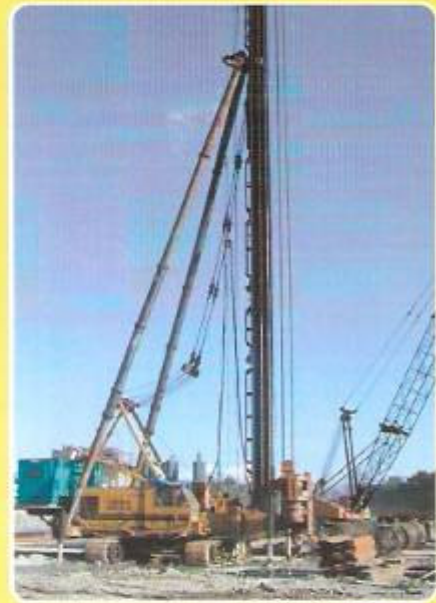
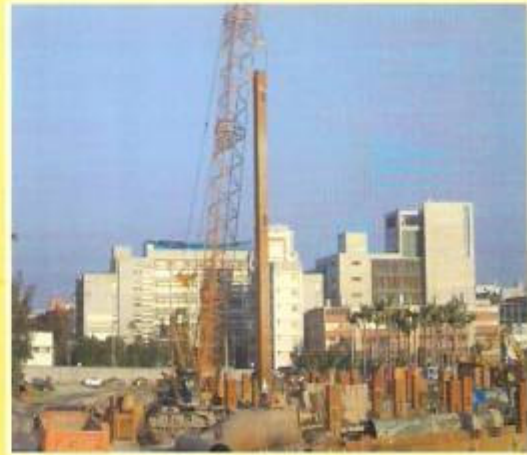
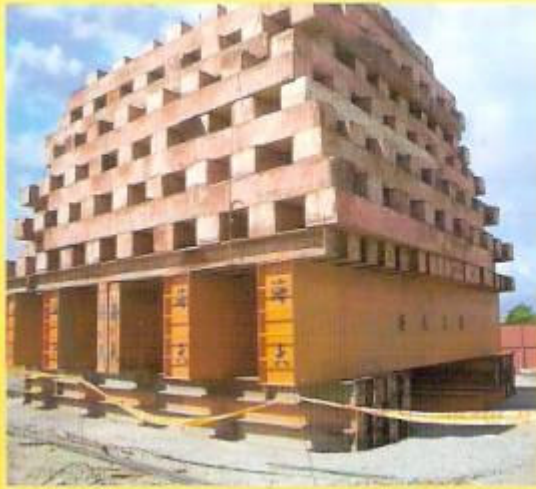
NAME	QUANTITY	TYPE
Reverse Circulation Drill Machine	3SUIT	S-600
Reverse Circulation Drill Machine	4SUIT	S-500 AUTO
Reverse Circulation Drill Machine	5SUIT	S-500
Casing Oscillator Drill Machine	5PCS	LEFFER-VRM2000(GERMANY)
Casing Oscillator Drill Machine	1PCS	LEFFER-VRM2500(GERMANY)
Casing Oscillator Drill Machine	4PCS	LING-CHI LK-2000 (TAIWAN)
Casing Oscillator Drill Machine	2PCS	正豐-2000 (TAIWAN)
Casing Rotator Drill Machine	1PCS	NIPPON SHARYO RT-200
Casing Rotator Drill Machine	1PCS	SANWA KIHON
Auger Machine	1PCS	DH-608-120M
Auger Machine	1PCS	DH-508-100M
Crawler Crane 100T	1PCS	KOBELCO FS-100
Crawler Crane 90T	3PCS	KOBELCO FS-90
Crawler Crane 80T	3PCS	KOBELCO 7080
Crawler Crane 80T	1PCS	KOBELCO BM-800
Crawler Crane 80T	2PCS	HITACH KH300
Crawler Crane 65T	1PCS	KOBELCO 7065
Crawler Crane 65T	1PCS	NIPPON SHARYO DH605
Wheel Crane	7PCS	40-80T
Excavator	9PCS	mitsubishi 180
Generator	9PCS	125~350KV
Vibration	3SUIT	60HP
Screw Compressor	5PCS	High Pressure
Pile Load Testing Equipment	2SET	



MAJOR PROJECT AWARDED

Description of Project	Client	CONTENT	YEAR
Taipei XinSheng N. Rd Viaduct Project-2	Taipei New Construction Office	100-120cm/90pcs	1977
WenChang Bridge	Taipei New Construction Office	120-150cm/220pcs	1979
Dihua Bridge	Taipei New Construction Office	200-130cm/150pcs	1981
YongFu Bridge	Taipei New Construction Office	100-140cm/350pcs	1982
China Times Building	DA CIN Construction Co., Ltd	120-160cm/145pcs	1985
Taipei International Convention Center	Bureau Of Foreign Trade		1987
Taipei Arc De Triomphe Building	CHIAO TAI CONSTRUCTION CO.	120cm/554pcs	1987
Shin Kong WU HIO-SU Memorial Hospital	Fu Tsu Construction	100-180cm/240pcs	1990
Taipei MRT Muzha Line CM420 Project BR-2	Department Of Rapid Transit Systems TCG	180-240cm/204pcs Top-Down Construction Method	1992
		100-200cm/40pcs Top-Down Construction Method	
KMT Official Building	DA CIN Construction Co., Ltd	160-200cm/105pcs	1994
DuZu Public House Project Phase II	Department Of Urban Development Taipei City Government	120cm/520pcs	1996
Ningang Software Park	RSEA Engineering Corporation	120-220cm/202pcs	1996
Continental Engineering Corp The Village	Continental Engineering Corp.	100-160cm/363pcs Auger Pile Method	1998
Taipei 101 Driving Analysis Test On Piles	Taipei Financial Center	120-280cm/15pcs Top-Down Construction Method	2000
Dihua Sewage Works Phase II	Taipei Sewer Systems Office	100cm/1600pcs Reverse Circulation Pile Method	2001
NO1 Provincial highway Viaduct	Directorate General Of Highways/MOT/Continental Engineering Corp	100-150cm/924pcs All Casing Pile Method	
Taiwan High Speed Rail Project Contract C280	Bureau Of High Speed Rail, MOT/Continental Engineering Corp	150-200cm/1200pcs All Casing Pile Method	2001
Taiwan High Speed Rail Project Contract C290	Bureau Of High Speed Rail, MOT/Continental Engineering Corp	200cm/1500pcs Reverse Circulation Pile Method	2001
Macao Bank (Head Office) Building	Continental Engineering Corp	200-225cm/130pcs Top-Down Construction Method	2002
Kaohsiung Dream Mall Project	International Engineering & Construction Corp	180-300cm/265pcs Top-Down Construction Method	2003
Taipei MRT KCSA, Xindiang	Department Of Rapid Transit Systems, TCG RES Engineering Corporation	100-150cm/300pcs All Casing Pile Method	2004
Ningang Station Extension Project	Railway Reconstruction Bureau/ Evergreen Construction Corp.	200cm/400pcs All Casing Pile Method	2004
Singshan Station Extension Project	Railway Reconstruction Bureau/ Asia World Engineering & Construction Co.	200cm/1500pcs Reverse Circulation Pile Method	2004
MRT CB18/Nehua/DORIS	Department Of Rapid Transit Systems, TCG / Pan Asia Corporation	150cm/180pcs All Casing Pile Method	2004
Ministry Of National Defense R.O.C DuZu Bo-A Project	Ministry Of National Defense R.O.C/ RES Engineering Corp.	150cm/180pcs All Casing Pile Method-Top-Down	2005
NO5 National Freeway C801 Project	Taiwan Area National Expressway Freeway Bureau/ Pan Asia Corporation	200cm/140pcs All Casing Pile Method	2006
Taiwan Power Company Extra High Voltage Substation Rebuilding in GaoXia, Taipei	Taiwan Power Company/Hwang Chang General Contractor Co., Ltd	150-250cm/570pcs Reverse Circulation Pile Method	2006
Cathay Financial Building In NsHs, Taipei	Cathay World Estate/Sun Cheng Engineering	150-200cm/570pcs Reverse Circulation Pile Method	2006
Taiwan Soka Association Cultural Institute Construction	TAISEI Corporation Taipei Branch	100-200cm/215pcs All Casing Pile Method-Top-Down	2007
Taipei Physical Education College Building in Tainan, Taipei	Taipei New Construction Office/ Hwang Chang General Contractor Co., Ltd	150-200cm/481pcs All Casing Pile Method	
Eastern Multimedia Group Head Office Construction (Driving Analysis Test On Piles)	Eastern Multimedia Group/Chiyohs Corporation	15pcs Reverse Circulation Pile Method	





BUSINESS ITEM

- Reverse Circulation Pile (Large-Diameter Bored Pile)
- All Casing Pile
- Secant Pile Wall Method
- Top-Down Construction Method (Steel Pole Putting
- Auger Pile
- Sonic Integrity Testing and Analysis
- Pile Load Testing and Analysis

COMPANY /

ADDRESS /

PHONE NO. /

FACSIMILE NO. /

e-mail /

PRESIDENT /

CONTACT PERSON /

Tang Yuang Construction Engineer, Inc

2F, No.239, Nu-An Street, Taipei, Taiwan

886-2-2503-7469

886-2-2515-5296

ty168999@ms25.hinet.net

CHENG-HUNG CHANG

TING-WEI CHANG